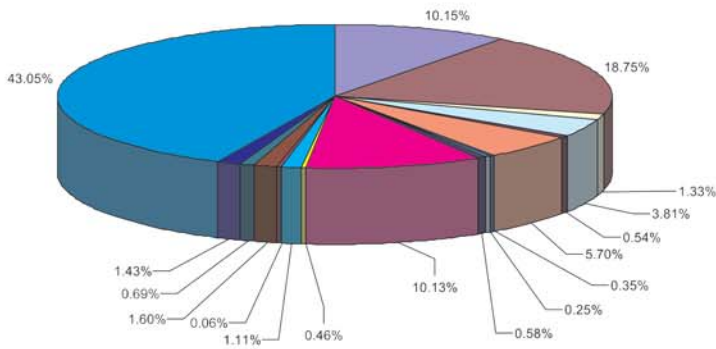


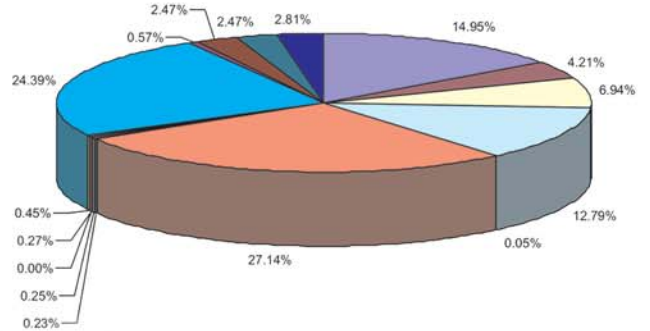
# Budget

## 2008-09

### Receipt



### Expenditure

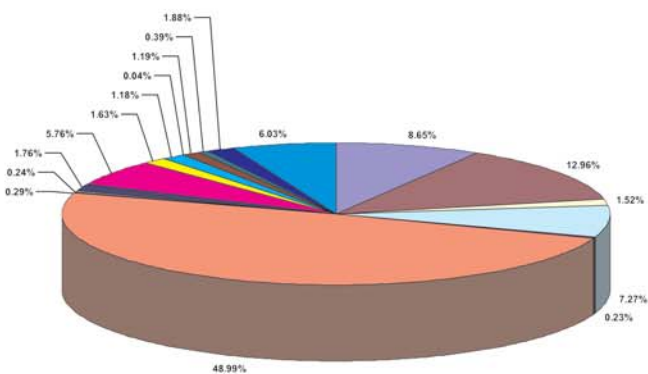


- Tax Revenue
- Assigned Revenue & Compensation
- Rental Income from Municipal Properties
- Fees and user charges
- Sale & Hire Charges
- Revenue Grant Contribution & Subsidies
- Income from investment
- Interest Earned
- Other Income
- Loan
- Deposit Received
- Grant & Contribution for specific purpose
- Sale Proceed of assets
- Deposit Work
- Recoveries of Loan & Advance from Staff
- Income Tax, Sales Tax, Royalty deduction
- Grant in Aid through JNNURM

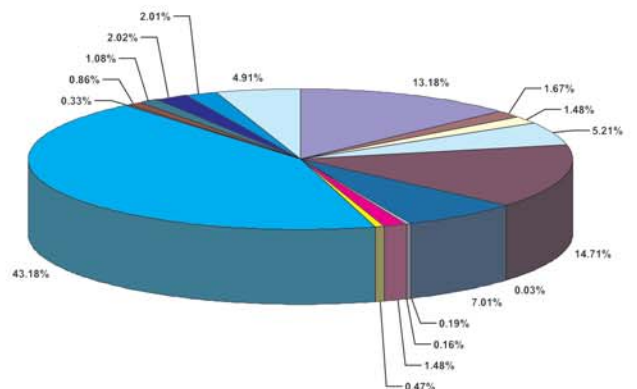
- General Administration & other Establishment
- Administrative Expenses
- Solid Waste Management
- Repair & Maintenance
- Interest & Finance Charges
- Programme Expenses
- Revenue Grants, Contribution & Subsidies
- Misc. Contingency
- Repayment of Loan
- Refund of Deposit
- Acquisition & purchase of fixed Asset
- Capital Work
- Deposit Work
- Investment General Fund
- Loan & Advances
- Purchase of Store Materials.

## 2009-10

### Receipt



### Expenditure



- Tax Revenue
- Assigned Revenue & Compensation
- Rental Income from Municipal Properties
- Fees and user charges
- Sale & Hire Charges
- Revenue Grant Contribution & Subsidies
- Income from investment
- Interest Earned
- Other Income
- Loan
- Deposit Received
- Grant & Contribution for specific purpose
- Sale Proceed of assets
- Deposit Work
- Recoveries of Loan & Advance from Staff
- Income Tax, Sales Tax, Royalty deduction
- Opening Balance.

- General Administration & other Establishment
- Administrative Expenses
- Coservancy Expenses
- Solid Waste Management
- Repair & Maintenance
- Interest & Finance Charges
- Programme Expenses
- Revenue Grants, Contribution & Subsidies
- Misc. Contingency
- Repayment of Loan
- Refund of Deposit
- Acquisition & purchase of fixed Asset
- Capital Work
- Deposit Work
- Investment General Fund
- Loan & Advances
- T.D.S
- Purchase of Store Materials.